

## Product Setup Instructions

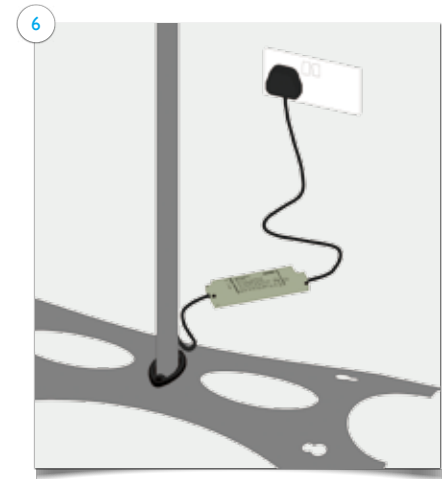
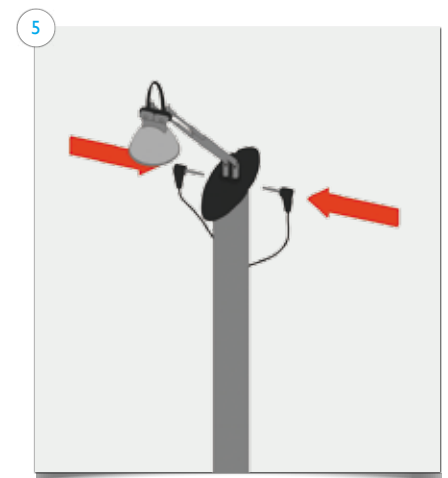
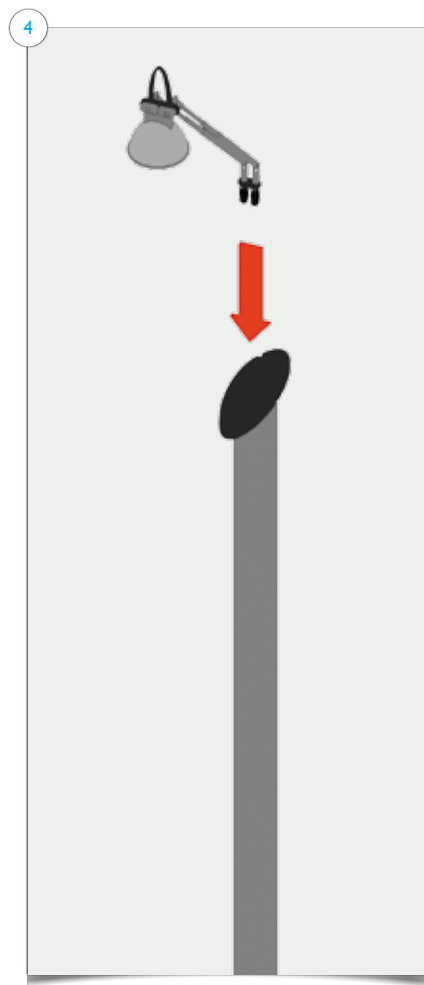
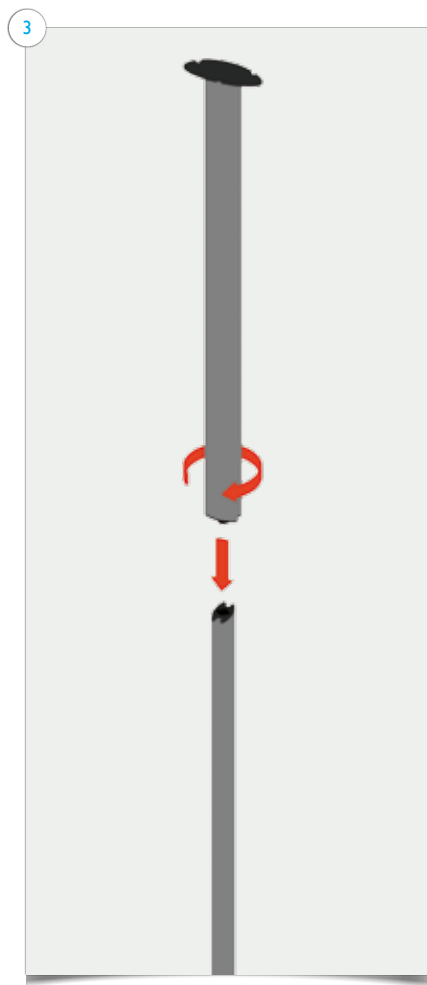
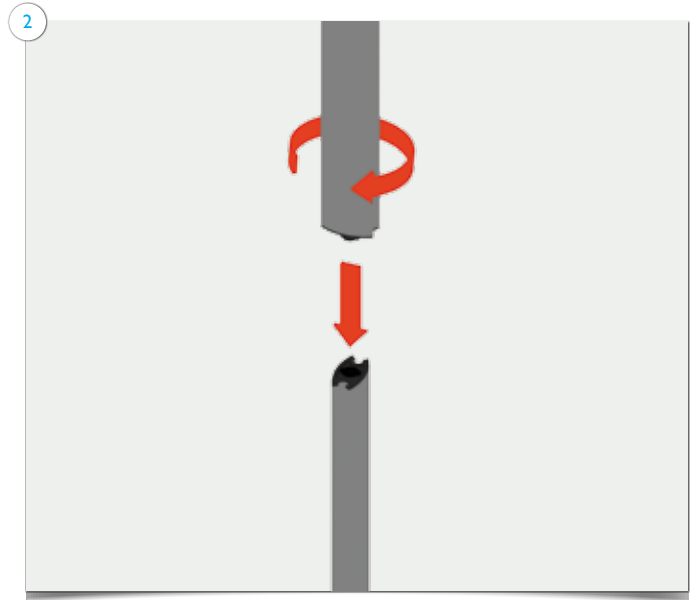
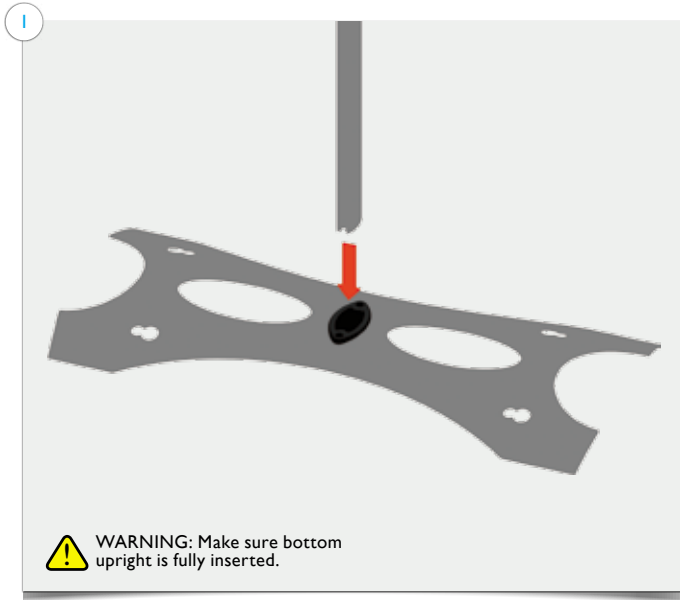
### Original Twist •

- Easi Link Kit •
- Flexi Link Kit •
- Media Twist •
- 32" Media Twist •
- Flat End Cap •
- Curved End Cap •
- Twist Counter •
- Double Hardcase Conversion •
- Single Hardcase Conversion •
- Twist Shelf •




## Items

1x base with rubber grommet; 1x bottom upright section; 1x middle upright section; 1x top upright section; 1x light; 1x transformer; 1x graphic panel with finishing strips.



Part2  
Original Twist Setup Instructions

 **WARNING:** Make sure bottom upright is fully inserted. Twist the upright sections clockwise to lock, anti-clockwise to open – do not force.

